



Buckeye Local School District

Facilities Committee / Public Meeting

February 12, 2020



Welcome & Introductions



Cheryl Fisher

TDA

Educational/
Master Planner



Brad Gellert

TDA

Project Architect



Brooke Nesbit

TDA

Communications



Jeff Tuckerman
Hammond Const.

Regional Program
Consultant



Agenda

Building Tour

Purpose...Why Now?

Where are we in the process?

Next steps

Questions

Problem Statement

The main issue is summarized between renovating our existing buildings and expecting them to meet our future needs, or using funds leveraged with local and OFCC dollars to build new buildings.



Unites individuals, communities
and resources to create a WORLD
CLASS LEARNING COMMUNITY that
gives ALL students the
opportunity to be successful in
THEIR future.



Why now?



Why Now?

- Our facilities need to properly support our educational programs
- We need to appropriately plan for the future
- A thoughtful Master plan allows for spending money wisely
- Ensures our investments are well-managed
- A “no-cost” option is not a choice
- Together, we need to fix the problem



WHY NOW?

WARM, SAFE, DRY

Ensure our schools are operating with modern safety, climate control systems, and dry roofs

OUR BUILDINGS ARE AGING

98 years old (Kingsville & Braden) to our newest (Edgewood HS) at 59 years old

INEFFICIENT

Becoming more difficult to maintain
Both educationally and financially

STATE FUNDING

33% Local and 67% State

OPPORTUNITY IS NOW

67% in state funding that may not be available in the future

READY FOR TOMORROW

Ensure classrooms provide access to technology for all students – like the ones offered at other top-rated schools in our area



WHY NOW?

WARM, SAFE, DRY

Ensure our schools are operating with modern safety, climate control systems, and dry roofs

- Aging heating infrastructure. Inability to regulate heat and air. When pipes leak, difficult to trace and locate.
- Leaking roofs – moisture infiltration occurring. We currently have **\$2,438,098** in roofing replacement needs.
- Our buildings were not designed with today's safety features in mind. New school design prevent direct access by visitors



WHY NOW?

WARM, SAFE, DRY

Ensure our schools are operating with modern safety, climate control systems, and dry roofs

Security Case Example: Edgewood High School



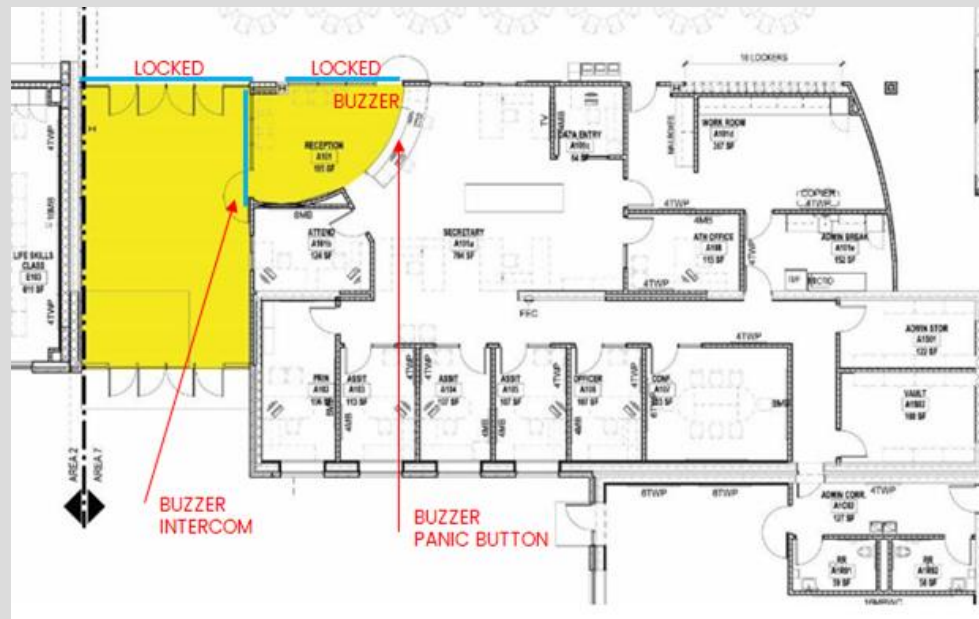
Main entrance does not filter into main office for proper clearance/checkpoint



WHY NOW?

WARM, SAFE, DRY

Ensure our schools are operating with modern safety, climate control systems, and dry roofs



Proper Secure Entrance – Standard in today’s educational facility designs



WHY NOW?

OUR BUILDINGS ARE AGING

98 years old (Kingsville & Braden) to our newest
(Edgewood HS) at 59 years old



WHY NOW?

WARM, SAFE, DRY

Ensure our schools are operating with modern safety, climate control systems, and dry roofs

OUR BUILDINGS ARE AGING

98 years old (Kingsville & Braden) to our newest (Edgewood HS) at 59 years old

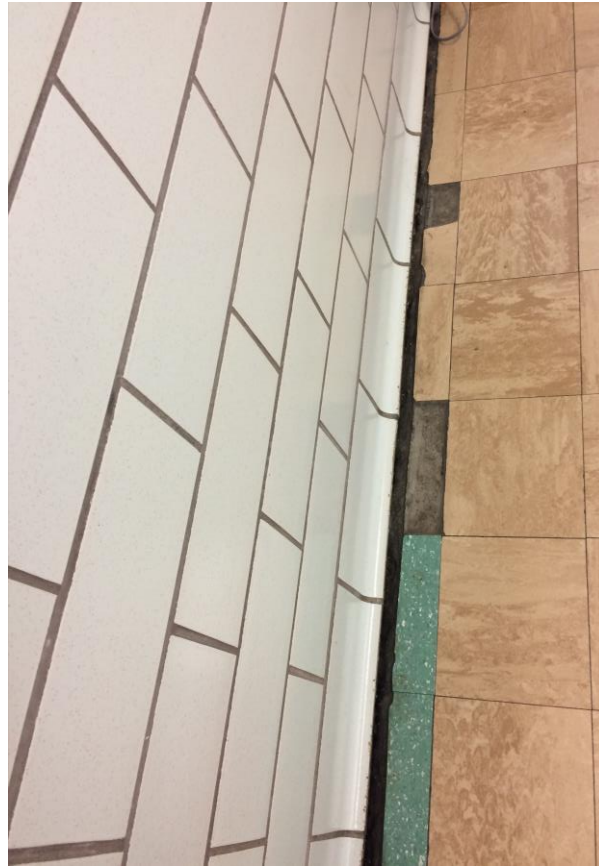
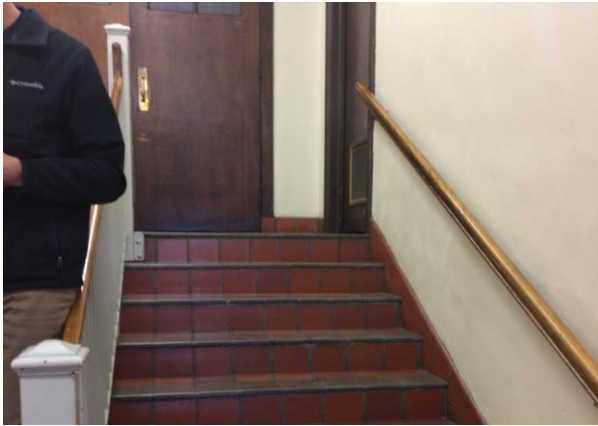
- As our buildings age, the cost to maintain our schools continues to grow. Financially, there is no “zero cost” option
- **92 years old** – Kingsville & Braden Schools. Our oldest buildings.
- **59 years old** – Edgewood HS – our youngest building.
- We want to spend our money **WISELY**. Building new is the most cost-effective option
- We have ***not ignored*** our facility needs and have done the best we can with our limited PI fund of approx. **\$430K per year**





Why now?





Why now?



WHY NOW?

INEFFICIENT

Becoming more difficult to maintain
Both educationally and financially



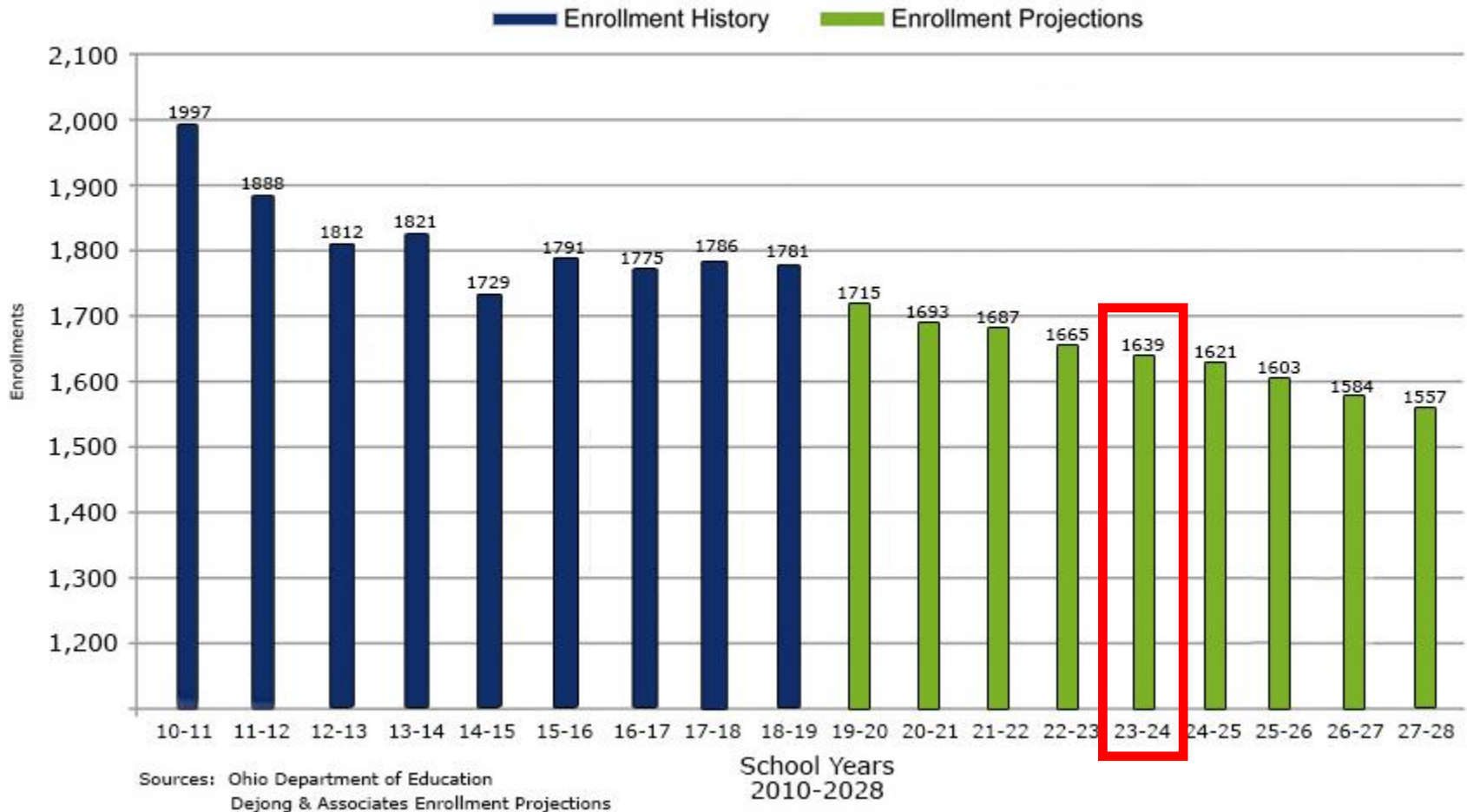
WHY NOW?

School	Year Built	Renovation / Rebuild Percentage	2019 Assessment/ Validation
Kingsville Elementary	1928	103%	\$14,605,450.43
Ridgeview ES	1957	86%	\$12,009,615.53
Braden MS	1928	86%	\$24,903,544.30
Edgewood HS	1961	74%	\$25,106,454.32
Totals			\$76,625,064.58



WHY NOW?

ENROLLMENTS: HISTORIC & PROJECTED Buckeye Local School District



WHY NOW?

OPPORTUNITY IS NOW

67% in state funding that may not be available in the future



WHY NOW?

We are eligible to receive a reimbursement of **67%** state co-funding from the OFCC!

		Fiscal Year Eligibility Ranking													
Year		07	08	09	10	11	12	13	14	15	16	17	18	19	20
Ranking		444	448	456	454	440	438	439	436	413	372	306	250	211	200
Local Share %		73%	73%	75%	74%	72%	72%	72%	71%	66%	61%	50%	41%	35%	33%

Although we are rising yearly in terms of state funding, the yearly cost increases for construction.

The longer we wait, the more it will cost.



WHY NOW?

- Greatest OFCC co-funding contribution in over 15 years. By participating in an OFCC ELPP Project, we lock in our 67% co-funding credit.
- Facilities Improvement opportunities now through ELPP vs. having to wait under CFAP
- Bond Issue Approval Trend: We have had more districts approve levies/bond issue than we have seen in the past.
- Current Economic Climate: Interest Rates are at a historic low.
- Construction costs will continue to increase over the years, so implementing improvement projects as soon as possible will protect against paying more in the future.



WHY NOW?

READY FOR TOMORROW

Ensure classrooms provide access to technology for all students – like the ones offered at other top-rated schools in our area



SAFETY

Modern Schools



Secure Vestibule/Main Office



Our Schools



Vestibule does not filter into office

PHYSICALLY COMFORTABLE & HEALTHY

Modern Schools



Proper fresh air, open and bright

Our Schools



Braden MS Classroom



COLLABORATION AREAS

Modern Schools



Small Group Rooms for student and teacher collaboration

Our Schools



Ridgeview break-out space in CR



TECHNOLOGY

Modern Schools



Media Rich STEAM LAB

Our Schools



Ceiling mounted projector Technology



STUDENT ENGAGEMENT

Modern Schools



Classroom supports project-based teaching & learning

Our Schools



Classrooms do not support project-based teaching and learning



COMMUNITY ENGAGEMENT

Modern Schools



Joint Use Recreational Spaces for Community

Our Schools



Student gymnasium



Agenda

Building Tour

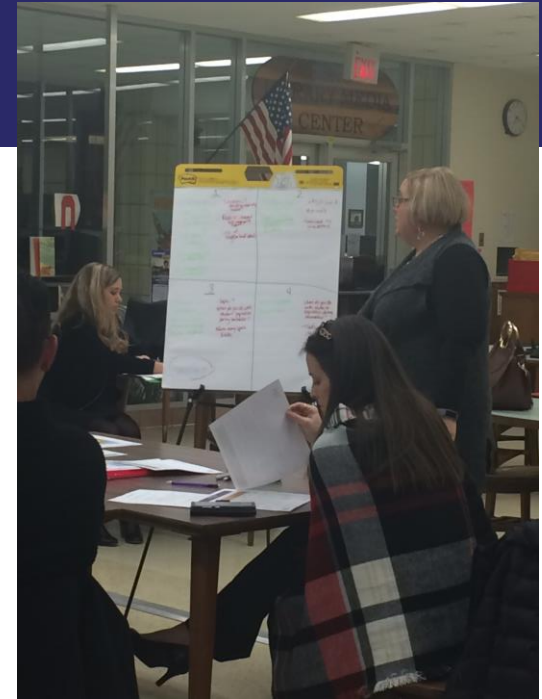
Purpose...Why Now?

Where are we in the process?

Next steps

Questions

Exploring Master Plan Options



① Lowest amount of \$ out of pocket
 - centralized location
 - least amount cost to the district, just payers
 - property not being enough - size-wise
 - safety mixing HS w/ ES
 - least potential loss of amenities
 - low LPI
 - get to keep amenities - space for baseball field
 - get to keep 1- of the 4 existing schools
 - mixing grade levels
 - Septic issue

② - con - local share
 - pro - separation of grade sites
 - allows you to consider two different sites
 - cost the build & maintain higher - con
 - opportunity to keep existing space
 - centralize the loss for maintenance of such (property-wise)

③ - cost - con
 - least logical
 - pro - portfolio in front of Baden
 - pro - what schools will sell the best
 - the only w/ public sewer
 - option for possibility for three entrances
 - picking up & moving off in neighborhoods

New Ideas
 - property search for land for sale & compare to what we currently have.

Table 2

①
 - Location -> how far from existing
 - Pro - choice will compact
 - Loss of neighborhood sites

②
 - + SM level & not only
 - affected by site options

③
 - Septic? What do you do with student population during construction?
 - Needs many sport fields

④
 - What do you do with student population during construction?
 - Traffic flow - infrastructure
 - 2d most costly option
 - Bad location

Table 3

MASTER PLAN 1 *Table 3*

PROS	CONS
<ul style="list-style-type: none"> - Cost Effective - Sharing Resources - Creates Unity in ES 	<ul style="list-style-type: none"> - All students under 1 building - Location - loss of neighborhood schools

MASTER PLAN #2

<ul style="list-style-type: none"> - Creates Unity in ES enrollment - For the ES, location at Edgewood - explain why - Support expansion Phase 2 Roswell + 11200 Edgewood 	<ul style="list-style-type: none"> - Cost ↑ than Plan 1 - Location for same
--	---

Discussion @ Kennesaw School Day - shared the 11 impacts

MASTER PLAN 3

PROS	CONS
	Cost & Room Configurations

MASTER PLAN 4

PROS	CONS
	Cost & Room Configurations

Discussion @ Kennesaw School Day - shared the 11 impacts

Every table talked about the pros and cons to each plan. Overlapping comments include Plan 1 being most cost effective, and Plan 3 allows for keeping certain amenities.

Exploring Master Plan Options (updated 2/10/20)

Master Plan 1 – OFCC Base Plan:

Construct New PK-12 School
Abate/Demo Existing Schools

Total Preliminary Cost \$63.2M

Local Share \$20.8M

State Share \$42.4M

Estimated Millage 4.47 (\$13/month based on \$100K home)

Master Plan 2

Construct New PK-5 School
Construct New 6-12 School
Abate/Demo Existing Schools

Total Preliminary Cost \$69.3M

Local Share \$27M

State Share \$42.3M

Estimated Millage 5.65 (\$16.50/month based on \$100K home)

Master Plan 3

Renovate / Add to Edgewood to create PK-12
Abate/Demo Kingsville ES, Braden MS, & Ridgeview ES

Total Preliminary Cost \$59.4M

Local Share \$20.9M

State Share \$38.5M

Estimated Millage 4.49 (\$13/month based on \$100K home)

Master Plan 4:

Renovate/Add to Braden MS to create PK-12
Demo Existing Kingsville ES, Braden MS & Edgewood

Total Preliminary Cost \$65.3M

Local Share \$25.3M

State Share \$40M

Estimated Millage 5.33 (\$15.54/month based on \$100K home)

Costs are preliminary, based on OFCC 2019 cost set with a 10% increase for anticipated yearly cost update. They do not include any LFI's at this point in time.

Exploring Master Plan Options

New - Master Plan 5:

Renovations to Edgewood HS for grades 9-12
Build 1 new ES for grades PK-8
Abate/Demo Braden, Kingsville & Ridgeview ES

Total Preliminary Cost \$72.1M

Local Share \$30.1M

State Share \$42M

Estimated Millage 6.25 (\$18.21/month based on \$100K home)

New - Master Plan 6:

Renovations to Edgewood, Braden, Ridgeview, and Kingsville Schools

Total Preliminary Cost \$88M

Local Share \$45.7M

State Share \$42.3M

Estimated Millage 8.66 (\$25/month based on \$100K home)

Costs are preliminary, based on OFCC 2019 cost set with a 10% increase for anticipated yearly cost update. They do not include any LFI's at this point in time.

Exploring Master Plan Options

**IMPORTANT NOTE:
THESE COSTS AND MILLAGE
AMOUNTS WILL CHANGE AS WE
CONTINUE TO REFINE
THE MASTER PLANS**

Costs are preliminary, based on OFCC 2019 cost set with a 10% increase for anticipated yearly cost update. They do not include any LFI's at this point in time.

Agenda

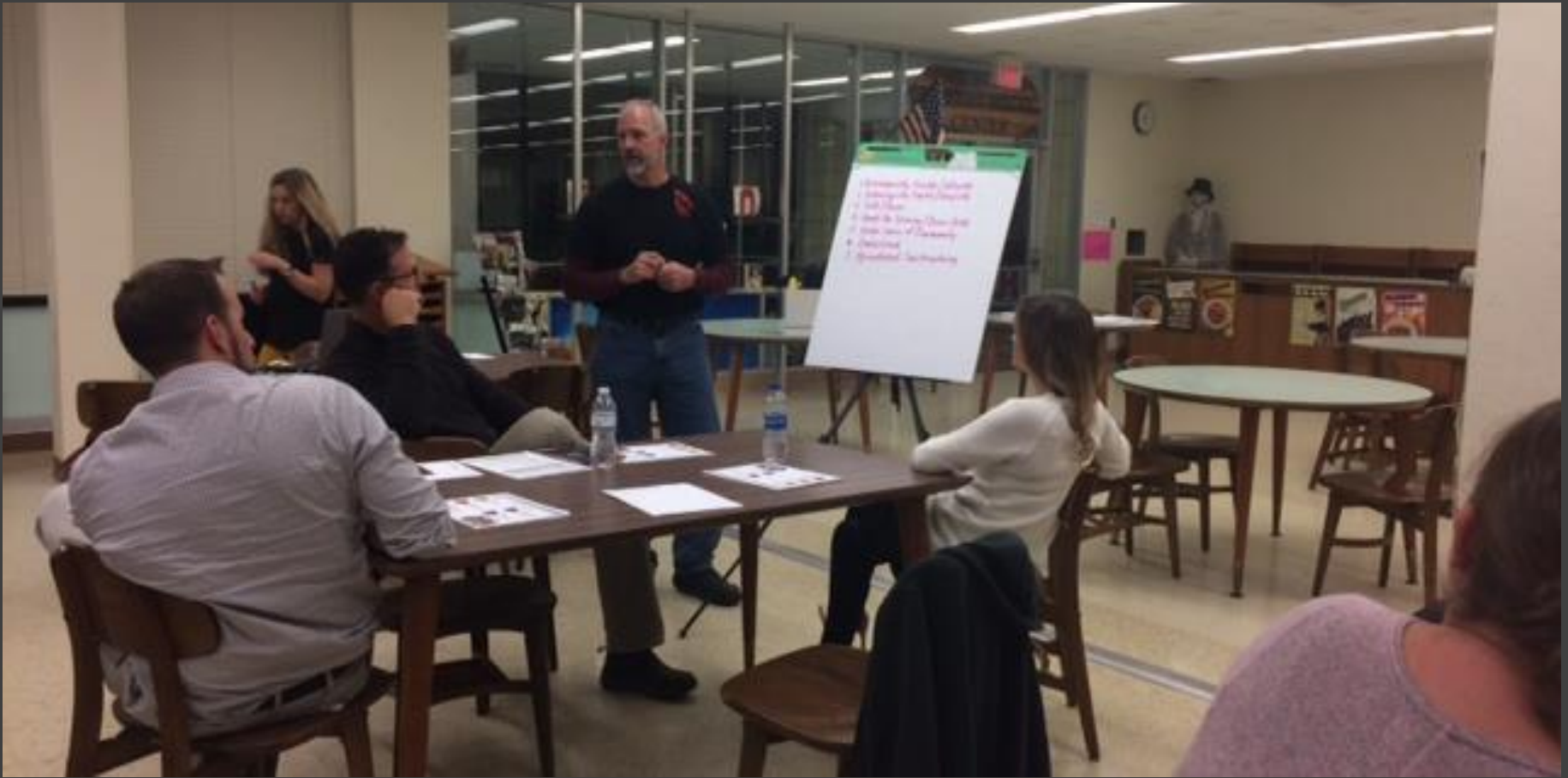
Building Tour

Purpose...Why Now?

Where are we in the process?


Next steps

Questions



Next Steps

- Committee will continue to explore various master plan options / identify pros and cons
- District maintain transparency and open line of communication with the community
- Hold various community sessions for stakeholder input and feedback

A group of young women, likely a sports team, are posed for a photo. They are wearing red athletic tops and shorts. The tops feature a white tiger head logo and the word "BRADEN". One woman in the center is holding a large, ornate trophy. Another woman to her right is holding a smaller trophy. The background shows a wooden structure with a large arched opening, and other people are visible in the distance. The overall scene is outdoors, possibly at a sports event.

Q & A Thank You!